



# Conference Program

September 29 & 30  
Harrisburg

*A Year of  
Resilience*



PCCYFS CONFERENCE 2021

[pccyfs.org](http://pccyfs.org)



I want an insurance broker  
who understands the needs  
of a human services organization...  
a specialist in our field.

That's why I chose Brown & Brown Insurance.



John F. Ehresman, AAI  
Senior Vice President  
Insurance & Risk Management Consultant  
Brown & Brown Lehigh Valley, LP  
3001 Emrick Blvd, Suite 120  
Bethlehem, PA 18020  
Tel: 610-694-1884



# PCCYFS MESSAGE FROM THE PRESIDENT/CEO

Dear Friends:

It is my great pleasure to welcome you to our 2021 Annual Conference, aptly themed “A Year of Resilience.” As President and CEO of Pennsylvania’s premier association for children’s service providers, I look forward to this conference every year. It gives me a wonderful opportunity to meet with all of you directly and better position PCCYFS to represent your interests in Harrisburg and across the Commonwealth.

I am thrilled at the opportunity to have an in-person component to our conference this year, not only for the chance to network with all of you but also as an indication that PCCYFS has made progress from the tumultuous past 18 months. Although PCCYFS is aware that the tough times are not entirely behind us, it is important to use this conference as a moment to celebrate the resilience of our field.

My staff and I pride ourselves on the first-rate professional development this conference offers through our strong portfolio of speakers and trainers, including our keynotes. Staff and the



Conference Planning Committee have worked very diligently to bring you a diverse offering of timely and relevant sessions.

I appreciate you being here with us - your presence here tells us how committed you are to advancing our shared goals. I am here to support in any way I can; if there is anything I can do to help you, please don't hesitate to reach out.

Best,  
Terry L. Clark, MPA

## TABLE OF CONTENTS

Wednesday Schedule, page 2  
Wednesday Keynote, page 3  
Thursday Schedule, page 4  
Thursday Keynote, page 5  
Wednesday Presenters, pages 6-8  
Networking Events, page 9  
Thursday Presenters, pages 10-12  
Covid-19 Safety, page 14





# WEDNESDAY/SEPTEMBER 29

7:30 - 8:30	Registration & Hot Breakfast			
7:30 - 5	Exhibits Open			
8:30 - 9	Welcoming Remarks			
9 - 10	Keynote: Dr. Lark Eshleman, Sponsored by <b>CAI &amp; enkompas BI</b>			
10 - 10:30	Break, Please Visit Our Exhibitor Booths			
Session 1	RESEARCH/ SYSTEMIC CHALLENGES	CLINICAL	TECHNOLOGY	LEADERSHIP
10:30 - noon	Trauma Lens Paradigm Shift—4 Questions  CENTRAL ROOM D	FTC & FGDM: Partners in Recovery  KEYSTONE	Improving Youth Outcomes through Machine Learning  CENTRAL ROOM E	What does the future hold for Behavioral Health Services? HERITAGE
noon - 1	Networking Luncheon			
Session 2	RESEARCH/ SYSTEMIC CHALLENGES	CLINICAL	TECHNOLOGY	LEADERSHIP
1 - 2:30	Best Practices to Avoid Abuse Incidents at a Provider Agency  CENTRAL ROOM D	Equine Assisted Therapy: Building an Innovative Practice KEYSTONE	Engaging Your Community Through Social Media Strategies CENTRAL ROOM E	9 Transformational Competencies Needed by Today's Nonprofit HERITAGE
2 - 3	Ice Cream Social Sponsored by <b>The Academy Schools</b>			
Session 3	RESEARCH/ SYSTEMIC CHALLENGES	CLINICAL	TECHNOLOGY	LEADERSHIP
3 - 4:30	An Appreciative Approach to Staff Retention  HERITAGE	Autism & the Juvenile Justice System CENTRAL ROOM D	Measuring What Matters Most: The Power of Business Intelligence CENTRAL ROOM E	Communication Trust: A Strategic Approach to Reputation Mgt. KEYSTONE
5 - 6	PCCYFS Board Meeting			
6	Dinner on Your Own but Not Alone! Join a Group of Your Choice			
6:30 - 8:30	Networking Event Sponsored by <b>The Academy Schools</b>			
8:30 - 11	Hospitality Suite Sponsored by <b>Brown &amp; Brown</b>			



# KEYNOTE DR. LARK ESHLEMAN

(1.0 CEU credits)

Lark Eshleman, Ph.D. is a child and adolescent psychotherapist who is an expert in working with children who have experienced early emotional trauma, attachment difficulties, neglect and abuse.

She became a Certified School Psychologist in Pennsylvania in 1994, is Board Certified in Domestic Violence by the American Academy of Experts in Traumatic Stress, and has had successful careers as an elementary school principal and as a children's librarian.

Dr. Eshleman is the founder of the Institute for Children and Families (ICF) which functioned in West Chester and Lancaster, PA, from 2000 to 2010. ICF was a leading treatment center for children who suffer from the lasting effects of early trauma, and from serious and destructive breaks in the bonding and attachment process between child and parent. The Center was also the site of several research projects and proved itself to be extraordinarily successful in providing efficacious, innovative and highly successful treatment for children and their families in this underserved population of adoption, foster care, and childhood trauma.

Dr. Eshleman is trained and highly practiced in therapeutic practices of Theraplay®, EMDR, EEG Biofeedback (Neurofeedback), Attachment and Narrative Therapy, Trauma Art Narrative Therapy (TANT), family and individual psychotherapy, and school psychology for



children with significant trauma and attachment issues.

Her work has brought her into therapeutic contact with children and families who have suffered the emotional, psychological and neurologically damaging effects of war and other forms of organized violence. In 1997 she was instrumental in working with Rotary International and the Rotary Club of Lancaster, PA to develop a treatment and professional training center in Croatia after the Balkan war. From 1997 through 2000 she volunteered more than 10 months at the center.

She worked on a New Orleans/Houston based project called "Welcome Home" in which children returning to New Orleans schools were screened and referred for on-site programs to help them deal with the extreme stresses in their lives due to Hurricanes Katrina & Rita.

# THURSDAY/SEPTEMBER 30

8 - 9	Registration & Hot Breakfast			
8 - 4:30	Exhibits Open			
8:45 - 9	Welcoming Remarks			
9 - 10	Keynote: Ron L. James, Sponsored by <b>CAI &amp; enkompas BI</b>			
10 - 10:30	Break, Please Visit Our Exhibitor Booths			
Session 1	RESEARCH/ SYSTEMIC CHALLENGES	CLINICAL	TECHNOLOGY	LEADERSHIP
10:30 - noon	Effectiveness of Pre-Adjudicatory Diversion Panels in PA  KEYSTONE	Stuck on Resiliency: A Paradigm Shift  HERITAGE	Precision Analytics & Machine Learning to Improve Mental Health  CENTRAL ROOM D	How Green is Your Program Resiliency?  CENTRAL ROOM E
noon - 1:15	Networking Luncheon, Annual Business Meeting & Raffle			
Session 2	RESEARCH/ SYSTEMIC CHALLENGES	CLINICAL	TECHNOLOGY	LEADERSHIP
1:15 - 2:45	Enhancing Provider-County Continuous Quality Improvement  CENTRAL ROOM D	Where Transgender & Trauma Intersect  CENTRAL ROOM E	Better Outcomes for Children in & out of Homecare with Case AIM  KEYSTONE	Promoting a Team Culture of Resilience  HERITAGE
2:45 - 3	Break. Please Visit Our Exhibitor Booths			
Session 3	RESEARCH/ SYSTEMIC CHALLENGES	CLINICAL	TECHNOLOGY	LEADERSHIP
3 - 4:30	2021 Employment Law Compliance Issues & Trends  CENTRAL ROOM D	Current Adolescent Drug Trends  HERITAGE	Cybersecurity: Things that Keep You up at Night  KEYSTONE	Competitive Recruiting & Retention Strategies for 2021  CENTRAL ROOM E



# KEYNOTE RON L. JAMES

Ron spent over 25 years behind bars. Now he is committed to sharing the freedom he knows with others: a freedom he discovered behind bars, and now he is able to keep others from going through his same experience.

These are Ron's words:

We are all exposed to a wide variety of people and situations, but we are responsible for the choices we make. After spending 25 years in and out of prison, I was finally challenged to write my book, titled "Choices."

Every choice has a consequence – good or bad. Whether you decide to make good choices or bad choices, your life will be the result of those choices and consequences.

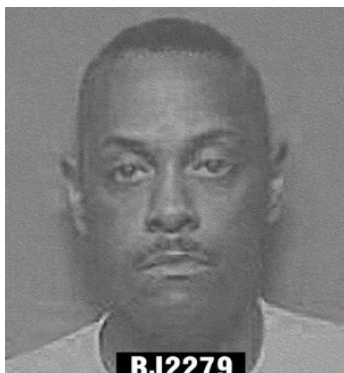
While I was in prison I exaggerated my own story to make myself sound better, seem tougher and look "badder" than the other inmates. I jockeyed for position behind those prison walls, in my cell, the yard, and mess hall. The truth was that I was scared out of my mind. I was ashamed of my drug use, of the weeks at a time before I was in prison when I did not eat, sleep, or bathe because of my addictions and running on the streets. This is not the sort of thing you discuss over lunch with people you just met.

I survived those years by humbling myself and reaching out to people and organizations willing to help me make positive choices. Had it not been for the outreach programs, mentoring, family, friends and men's ministry, I would not be writing this story today.

now



then



# WEDNESDAY PRESENTERS

**10:30 - noon**

(1.5 CEU credits)

## **Trauma Lens Paradigm Shift 4 Questions**

Faye Hall & Jeff Merkert  
Connection Resources

With more than twenty years of working together as a team, Faye and Jeff are well versed in covering all aspects of early trauma, child development and attachment. They will follow the simple outline of the four questions, answering each with examples and research. The audience will have opportunities to interact and ask for more information.

**Question 1:** Jeff will explain how early trauma occurs via a short role play of a child interacting with the caregiver. Faye will include the research in attachment and co-regulation.

**Question 2:** Faye and Jeff provide examples and research in early attachment co-regulation, child development, and internal belief systems.

**Question 3:** Faye and Jeff will provide examples of behaviors that result from early trauma and the affects on the caregiver when these behaviors occur.

**Question 4:** Faye and Jeff will discuss treatment modalities that are more success.

**10:30 - noon**

## **What does the future hold for Behavioral Health Services?**

Joan Erney, JD  
Behavioral Health Consultant/Spyglass Solutions

This presentation will provide a national and state update on innovations and best practices in meeting children, youth and families behavioral health needs. In our post COVID world, increasing access to and assuring high quality behavioral health treatment services is imperative, irrespective of setting or family situation. We will look at state policies and current practices; and forge new ideas for family driven, youth guided, cross system strategies to impact long term outcomes for those we serve. We will review barriers and opportunities to influence state and local policies to address the challenges that agencies face in delivering quality care. We will also discuss financial strategies, including Value Based and braided funding across systems.

**10:30 - noon**

(1.5 CEU credits)

## **FTC & FGDM: Partners in Recovery**

Carla Clark & Leslie Ward  
Northumberland County Children & Youth Services

This presentation will discuss how Northumberland County is utilizing Family Treatment Court in conjunction with Family Group Decision Making to address addiction issues with parents and extended family.

Through this presentation, we will discuss how FTC and FGDM work hand in hand to educate extended family as well as help the individual and the family work through the recovery process. Case examples will be provided.

**10:30 - noon**

## **Improving Youth Outcomes Through Machine Learning**

Shawn Peck  
Adelphoi Innovative Solutions

Matching a particular youth with a program that has a demonstrated ability to achieve a positive outcome is the most underleveraged variable in the success equation for youth involved in the child welfare and juvenile justice systems. FirstMatch™ is a state-of-the-art software solution that uses predictive analytics to help providers and placement decision makers, identify the most appropriate program for a child, both out of home and in home services, significantly increasing the likelihood of a positive outcome. FirstMatch™ uses information that has been collected from various assessments from youth, their families, past records, and the courts, and compares this information to the historic results of providers. By use of artificial intelligence, it compares the predictive factors of the referral to the historical outcomes achieved by unique programs for clients that presented with the same or similar predictive factors. A trained algorithm is utilized to determine which program has the highest likelihood of producing the desired outcomes from this specific youth. As part of the FirstMatch™ model, a report is provided to the courts or decision maker identifying each youth's likelihood of program completion and remain-out-of-care, along with other desired outcomes. Implementing FirstMatch™ could benefit the child welfare and juvenile justice systems by making the decision making process less subjective and more scientific by use of machine learning and data that is specific to the particular needs of a youth. Additionally, it has the capability to incorporate all readily available information that has been collected over the years but never formally analyzed.



**1 - 2:30**

## **Best Practices for Avoiding Abuse at Provider Agencies**

Lisa Bellis

Brown & Brown, ARM, CPG, CSM, CIC, CRIS

With pandemic-induced hiring issues and revival laws enacted throughout the country, it's more important than ever to RAAMP Up™ Abuse Prevention practices.

During our 90 minutes together, attendees will learn about an organization's standard of care, the formula to prevent abuse, the insurance market for abuse coverage, and our exclusive program to evaluate, supplement, and improve your existing Abuse Prevention Program. We look forward to seeing you!

**1 - 2:30**

## **9 Transformational Competencies Needed by Today's Nonprofit Leaders**

Dennis C. Miller

DCM Associates

This is an engaging, interactive and motivational presentation on the new nine competencies needed by today's nonprofit leaders. The nine competencies are: visionary thinking, emotional intelligence, relationship building, entrepreneurial spirit, collaboration, CEO's role in philanthropy, collaborator, succession planner, becoming a positive brand builder and inspirational motivator for your entire organization.

The traditional leadership competencies of being mission driven, community relationships, grant writer and program and services provider are still crucial. But in today's challenging times, successful nonprofit organizations seek leaders with the nine leadership competencies.

**1 - 2:30**

## **Engaging Your Community Through Social Media Strategies**

Emily Ferguson

Sarah A. Reed Children's Center

As organizations serving children and youth, we not only have a responsibility to educate our clients and families, but also the communities where we exist. This presentation will discuss how social media can aide your organization to reach its goals.

This presentation will address the use of social media for non-profit organizations, and how to utilize different platforms (Facebook, Instagram, LinkedIn, Twitter, and more) to engage and educate your audience about your mission, values, and services.

We will discuss the ways different departments can collaborate to help achieve mutual success in addition to using resources in the company and community. This presentation will assist organizations in creating a plan leveraging the resources they already possess to effectively utilize a variety of social media platforms

**1 - 2:30**

(1.5 CEU credits)

## **Equine-Assisted Therapy: Building an Innovative Practice**

Heather Girvin/Lone Oak  
Abigail Wilson, LSW, MSW  
Sarah Primak, LSW, MSW  
Katie Linebarger, LPC

Founded by Dr. Heather Girvin, Lone Oak is a equine-assisted therapeutic program that provides various services with various populations across all age groups to address complex social and mental health needs.

As a new and innovative program, Lone Oak was created to fill a gap in services in a Lancaster County community. Programming was thoughtfully combined to meet client's needs while building a community. This presentation will review the creation of a non-profit, creation of an innovative program, and the theoretical framework utilized. It will also describe equine-assisted therapeutic services and the benefit to clients.

# WEDNESDAY PRESENTERS

**3 - 4:30**

## **An Appreciative Approach to Staff Retention**

Stacy Taylor  
Hoffman Homes for Youth

The presentation will cover information discovered during dissertation research along with anecdotal experiences regarding experienced success with staff retention.

**3 - 4:30**

## **Measuring What Matters Most: The Power of Business Intelligence**

Scott Bachik  
enkompas, BI, LLC

The presentation will provide a foundation of Business Intelligence (BI), how it works, and highlight case studies of how Human Service Providers leveraged the power of BI to organize cross-functional data, visualize and communicate that data, and create insight and knowledge to drive transformational change and growth. The presentation will outline the Provider journey from their initial state through the transformation to having a functional decision support system with timely information. It will highlight what worked, what did not work, and outline the keys to success in implementing BI. The presentation will also review how to leverage BI to create automation and eliminate manual data management.

**3 - 4:30**

## **Autism & the Juvenile Justice System: How & When to Intervene & Support**

Kate Hooven & Lindy Mishler  
ASERT Collaborative

From 2009 to 2014, the Pennsylvania Autism Census found that the number of Pennsylvanians with autism spectrum disorder (ASD) receiving services increased from nearly 20,000 individuals to over 55,000 individuals. The number of individuals with autism who had contact with the juvenile and criminal justice systems also has increased.

The location, the circumstance and the outcomes are different in each case, but, there is an underlying theme in each incident—a call for training for law enforcement, corrections, justice system professionals and providers on how to identify, interact and support individuals with autism in the juvenile and criminal justice system.

**3 - 4:30**

## **Communicating Trust: A Strategic Approach to Reputation Management**

Tracy Pawelski  
PPO&S

Trust is an essential part of any organization's success. But almost daily, reputational issues make headlines, eroding trust with key stakeholders. This is especially relevant for PCCYFS where trust and reputation go to the very heart of your relationship with your members, children and families, policymakers and the media. This training leaves participants with concrete steps to proactively communicate your mission at the same time you are preparing for the challenges ahead.

PRESENTER BIOS  
[pccyfs.org/conference](http://pccyfs.org/conference)



# NETWORKING EVENTS

This year's conference offers many opportunities for networking. Wednesday, September 29 from 2 to 3 pm, there will be an Ice Cream Social sponsored by The Academy Schools. Everyone will be able to enjoy a sweet treat while talking to fellow attendees and exhibitors.

From 6:30 to 8:30 that evening, there will be networking mixer, also sponsored by The Academy Schools. This event provides a relaxed atmosphere for socializing. Hot hors d'oeuvres and a private bar will be available.

From 8:30 to 11 pm Wednesday, attendees are invited to stop by the Brown & Brown Hospitality Suite, where there will be a chance to relax, enjoy delicious desserts and talk to sponsors,

speakers and fellow attendees. A private bar will be available, as well.

Attendees will receive two complimentary drink tickets in their welcome bags from our premier sponsor Brown & Brown.

On Thursday, September 30, there will be a networking luncheon from noon to 1:15 pm. The Annual Membership Business Meeting will also take place at that time.



*Continuing our legacy of helping children  
for more than 150 years.*

**Love • Nurture • Heal**

*The mission of Bethany Children's Home is to provide  
a safe place of nurture, protection and supportive care  
to aid residents in self-understanding, growth and  
healing toward a brighter, healthier future.*



**Bethany Children's Home**



1863 Bethany Road • Womelsdorf, PA 19567  
610.589.4501 • bethanyhome.org



**FirstMatch<sup>®</sup>**

FirstMatch<sup>®</sup> is a predictive analytics  
software solution that will match youth with  
the right treatment program the first time.

[www.firstmatch.com](http://www.firstmatch.com)

# THURSDAY PRESENTERS

**10:30 - noon**

## **Stuck on Resiliency: A Paradigm Shift**

Evette Clarke  
EquityWorksBest LLC

In our society, under-served and marginalized (e.g. black and brown) children and families often are overexposed to trauma and hardship. This extreme exposure compels them to constantly employ resiliency efforts to survive and maintain their life chances, goals and desires.

The cognitive approach to serving and allocating valuable resources to these communities must consider the historic past and lack of equitable resources and treatment in order to improve outcomes for these deserving communities. We will explore these factors and discuss the value of equity in human services programming.

**10:30 - noon**

## **How Green is Your Program Resiliency?**

Andrea Richardson  
Info-Matrix

Frustrated by program evaluation results that are beyond your control? In 2020, we learned that resiliency matters. Creating the structure within your program that supports reporting the effectiveness of the services is crucial to today's private provider collaboration with county/state agencies.

Using collaboration and data-based decision making as a foundation of our discussion, participants will look at how educational standards and program outcomes can help measure program effectiveness and bridge crucial conversations with county/state agencies.

Participants will review effective strategies from collaborative initiatives that will support productive collaboration around system gaps that will ensure better qualified referrals for your program and better outcomes for children and families.

**10:30 - noon**

(1.5 CEU credits)

## **The Effectiveness of Pre-Adjudicatory Diversion Panels in Pennsylvania**

Joe Abraham & Courtney Wagaman  
The IMPACT Project

Pre-adjudication diversion can occur at various decision-making points in the juvenile justice system. It can provide alternatives for youth who have not yet entered the juvenile justice system but who are at imminent risk of being charged with a delinquent act, and can also channel youth who have been alleged to be delinquent away from formal court processing that could result in an adjudication of delinquency. Pre-adjudication diversion can occur at the school, law enforcement, magisterial district judge, and juvenile court levels.

The IMPACT Project has operated, two distinct, pre-adjudicatory diversion programs in Lehigh County, in partnership with Lehigh County Juvenile Probation since 1999. This training will provide and understanding of pre-adjudicatory diversion and the recidivism outcomes of a 13 year, 5 year, and another 5 year longitudinal study that demonstrates the effectiveness of Justice Panels in a variety of measures.

**10:30 - noon**

## **Precision Analytics & Machine Learning to Improve Mental Health Services for Children & Teens**

Kristen E. M. Gay, Pete York & Kate Ryan  
Gemma Services

Gemma Services will share how the organization is utilizing past and current client data to improve outcomes for youth in their Psychiatric Residential Treatment Program (PRTF). The presentation will outline steps the team took to develop and implement what they call the Insight Generator. During this presentation, participants will see how Gemma is using precision analytics and machine learning as a part of comprehensive treatment planning. A case study will be shared that demonstrates how the Insight Generator is used in the PRTF.



**1:15 - 2:45**

(1.5 CEU credits)

## **Where Trauma & Transgender Intersect**

Lisa Fritz  
Lancaster General Hospital

The presentation will address the multiple traumas encountered by transgender individuals throughout their lifetime. This will include microaggressions, traumas related to daily encounters and brain/body incongruence, and trauma related to systems in which the individuals live. The presentation will, also, address the larger traumas encountered in the forms of transphobia, abuse, and discrimination.

**1:15 - 2:45**

(1.5 CEU credits)

## **Better Outcomes for Children In & Out of Homecare with CaseAIM**

Jennifer Brumer & Morgan Ryan  
Children's Home of South Florida

Children are entitled to safe and timely permanency while in State custody. Recognizing the risk, associated with workload and turnover by direct case managers, CaseAIM was developed as a countermeasure to ensure the needs of every child are met timely.

The CaseAIM support team is comprised of people, process and technology to create efficiencies to support case management and provide timely services to the clients served. Children's Home Society of Florida is the only organization to develop, in collaboration with tech giants, the innovative solution CaseAIM. This workshop will review how CHS utilized CaseAIM as a countermeasure to lower turnover and decrease the length of stay for children in an out-of home placement, core elements of the program, and what the organization has learned from the implementation.



**1:15 - 2:45**

## **Enhancing Provider-County Continuous Quality Improvement Under FFPSA**

Kristine Creavey and Andy Grimm  
PA Child Welfare Resource Center

The Family First Prevention Services Act (FFPSA) emphasizes the use of program-level data to monitor program implementation and outcomes to refine and improve practices.

This continuous quality improvement (CQI) process will be explored not only in terms of best practices at the provider agency and program levels, but also in terms of how best to wield this data-driven process to monitor every eligible child's safety, permanency, and well-being. Participants will be encouraged to consider how they might expand the reach of their CQI process to include county agencies.

In the spirit of enhanced collaboration and teaming, we will end the session by providing tips and tricks for providers to use so that their communication of data to agencies and other stakeholders can be as appropriate and effective as possible.

**1:15 - 2:45**

(1.5 CEU credits)

## **Promoting a Team Culture of Resilience**

Susan Damico  
Devereux Center for Resilient Children

Leading teams can be difficult and leading teams during times of crisis can feel overwhelming. The science of resilience helps us to understand what skills, behaviors and attitudes are essential to navigate challenges and lead in ways that help our teams "bounce back" and move forward. As we navigate the current climate, leading with a resilience mindset is essential. In this workshop, participants will learn a holistic framework for promoting resilience within themselves, their staff and ultimately within the children and families served by the organization.

# THURSDAY PRESENTERS

**3 - 4:30**

(1.5 CEU credits)

## Current Drug Adolescent Trends

Matthew Null

Diversified Treatment Alternative Centers, LLC

Today's students are not just drinking beer and smoking a little weed. Are you aware of what waxing, boofing, and robotripping are? If you see writing on the bathroom stall from a student looking for Molly, they are not looking for a girl named Molly. If you were a student looking for drugs where would you try to get them? Learn what's new based on the speaker's years in the drug and alcohol field and working with students in treatment.

**3 - 4:30**

## Cyber Security: Things That Keep You Up at Night

Rex Johnson & Mark Fahnestock  
CAI

Hackers, Ransomware, and Bears, Oh My! Cyber fraud and abuse is a growing concern for many agencies, small and large alike. As technology evolves, the opportunity for cyber threats increases exponentially without taking the necessary precautions to protect yourself, your agency, and your client and staff data.

Learn about ongoing threats happening in the world today, as well as precautions and considerations you should be thinking about to help protect yourself and your agency. This session will help give you the tools and ideas to advance your cybersecurity protections so you can go back to having a good night's sleep.

**3 - 4:30**

## 2021 Employment Law Compliance Issues & Trends

Sarah Ivy, Richard Calabrese, & Rick Hackman  
Saxton & Stump

Human Resources Professionals and Benefits Administrators have been presented with a new set of challenges due to the change in Administration. From new requirements related to employee benefits and subsidies, implementation of new employment laws and increased enforcement of existing regulations, and COVID-19 return to work issues, employers have been confronted with an onslaught of changes, hurdles and obstacles with respect to protecting employee rights, limiting employer liability and maintaining a safe workplace.

Saxton & Stump attorneys Richard Hackman, Sarah Ivy and Richard Calabrese will identify the timely issues of which you should be aware and how to confront these issues from both a proactive and reactive standpoint.

**3 - 4:30**

## Competitive Recruiting Strategies for 2021

Sarah Patschke & Calyn Brewer  
Bethany Children's Home

If you were asked what the main concern of most employers today, you would probably say "staffing!" This session provides effective strategies for recruiting the ideal candidates. In addition to recruiting, we all know it is equally important to retain those ideal candidates. With so many changes in the nonprofit sector over the past year, it is crucial to adapt and create an engaging environment to increase staff retention. Join this brainstorming session to learn and share effective ideas in recruitment and retention.

# PCCYFS BOARD OF DIRECTORS

Dominick DiSalvo, Chair  
Rebecca Van der Groef, Vice Chair  
Laura Maines, Secretary  
Nick Riehl, Treasurer

Joseph Abraham  
Melanie Beidler  
Heather Bert  
Joseph Birli  
John Bukovac  
Erin Chick  
Mark Cunningham  
Robert Hausmann  
Nancy Kukovich  
Rosalind Lee  
Anita Paukovits  
Mike Shaffer  
Alyssa Snyder  
Kimberly Young

## **2020-2021 PCCYFS Conference Planning Committee**

Glenn Ammarell  
Heather Bert  
Dr. Joseph Birli  
Kirsten Eshleman  
Jeannette Geter  
Samea Kim  
Konrad Kammerer  
Jackie Kreshock  
Dr. Rosalind Lee  
David Mattern  
Abigail Wilson  
Kim Yakowski

## THANK YOU TO OUR SPONSORS

Brown & Brown  
The Academy Schools  
enkompas  
CAI  
MainLine Pharmacy  
Cove Prep  
First Match  
KidsPeace  
George Junior Republic  
Devereux Advanced  
Behavioral Health  
Children's Home of Reading



**Proud to support PA Council  
of Children, Youth & Family  
Services in improving the  
quality of life for the children,  
youth and families within  
our Commonwealth.**

[pa.beaconhealthoptions.com](http://pa.beaconhealthoptions.com)



# COVID-19 SAFETY

The health and safety of our conference attendees is a top priority. In light of the ongoing COVID-19 pandemic and the rise of the Delta variant, stringent safety precautions will take place. All registrants will be encouraged to wear a mask unless they are fully vaccinated against COVID-19 before the start of the PCCYFS Annual Conference.

Some of the safety measures include:

- Two tables to expedite registration and promote social distancing
- Hand sanitizer located in each session room, as well as throughout the hotel
- Bottles of hand sanitizer given to each attendee in their welcome bag
- Masks will be available at registration and the front desk for attendees if requested

- Spaced out seating in session rooms and wherever possible
- Multiple food lines for quicker/easier access
- Hotel staff will be wearing masks, as they serve food at buffet

**Devereux**  
ADVANCED BEHAVIORAL HEALTH

PENNSYLVANIA

[devereux.org/pa](http://devereux.org/pa) | (800) 345-1292



Visit [enkompas.com/business-intelligence](http://enkompas.com/business-intelligence)  
to see how you can strengthen the health of your entire organization.

## Business Intelligence for Human Services

*Turn Data into  
Actionable Information*

- Interactive Dashboards
- Detailed Reporting
- Advanced Analytics

*A Decision Management System Serving  
the C-Suite, Middle Management & Front Line Staff*

**enkompas**  **BI**

**Bob Hitson**

412-415-6343

[bhitson@enkompas.com](mailto:bhitson@enkompas.com)

**Chris Parry**

412-415-6301

[chrisp@enkompas.com](mailto:chrisp@enkompas.com)



# THE ACADEMY SCHOOLS SUMMIT ACADEMY NEW OUTLOOK ACADEMY

## OFFERING:

- Inpatient Substance Abuse Treatment
- Certified Residential Specialized Settings
- Shelter Care
- General Residential Services

To learn more or make a referral,  
call 724-282-1995

**INTERESTED IN JOINING OUR TEAM,  
CHECK OUT CAREER OPPORTUNITIES AT:**

**[theacademyschools.com](http://theacademyschools.com)**





## George Junior Republic IN PENNSYLVANIA

[www.gjr.org](http://www.gjr.org)

**SAVE THE DATE**  
PCCYFS Spring Conference  
April 6 & 7, 2022



### **COVE PREP**

*Cove PREP provides residential treatment, diagnostic services, and academic programming for adolescent male sex offenders.*

We offer hope to these young men through intensive, multifaceted treatment that examines the root cause of their behaviors from a personal perspective.

[www.coveprep.com](http://www.coveprep.com) | (724) 459-9700

P.O. Box G, Torrance, PA 15779



## Working Together, Changing Lives

*We strive to be your trusted partner in the delivery of vital health and human services that enhance lives every day.*

-  Strategic Planning
-  Business and Digital Transformation
-  Research and Policy Assistance
-  Project Management and Execution Support
-  Employment Services
-  Innovative Technology Solutions



People-Centric



Service-First



Stewardship



Communication



Collaboration



# PCCYFS STAFF



**TERRY CLARK**  
President/CEO



**DAVID MATTERN**  
Director of Operations



**SAMEA KIM, ESQ.**  
Associate Director



**KIM YAKOWSKI**  
Communications Director



**JACKIE KRESHOCK**  
Behavioral Health Manager



**ABBIE WILSON**  
Manager, Children's Policies & Programs



**ADINA PAPINCHAK**  
Administrative Assistant



**JEANNETTE GETER**  
Manager, Training & Southeast Services



**KIDSPACE PENNSYLVANIA**

**800-8KID-123** (800-854-3123)

Email: [admissions@kidspace.org](mailto:admissions@kidspace.org)

**Located near Allentown and Bethlehem, PA, our campus features a highly innovative, evidence-based treatment center and psychiatric hospital.**

**Our psychiatric hospital is part of the KidsPeace Continuum of Care offering intensive short-term stabilization.**

**Residential programs include:**

- Diagnostic
- Intensive Residential Treatment for youth with limitations in adaptive functioning
- Trauma, Resiliency, Empowerment, and Elevation Residential Program (T.R.E.E.) for youth with significant trauma including Commercial Sexual Exploitation of Children (CSEC)
- A.S.P.I.R.E. (Adolescent Sexual Preoccupation, Intervention, Responsibility and Education) Program

**Community-Based Services include:**

- Autism Services
- Outpatient
- Walk-in Assessments
- Partial Hospitalization
- Traditional and Kinship Foster Care\*
- SWAN and Private Adoption Services
- FGDM and Family Finding
- Intensive Behavioral Health Services



**Certification in Together Facing the Challenge\***



We respect our clients' privacy. The model(s) represented in this publication is (are) for illustrative purposes only and in no way represent or endorse KidsPeace. ©2021 KidsPeace other than stock photography and/or art.

**5300 KidsPeace Drive • Orefield, PA 18069-2044 | [www.kidspace.org](http://www.kidspace.org)**

# PCCYFS STATEMENT OF VALUES

*The membership of PCCYFS is committed to high quality, flexible, and innovative services for children, youth, and families that are easily accessible and support personal independence. In pursuit of this goal, we recognize a shared value base and foundation of practice that supports professional development and education, advocacy, and efforts to influence the funding environment.*

## **WE VALUE:**

### **Children and Their Families**

We support a strength-based approach in our work, recognizing the value and worth of each child and family.

### **Respect for Each Other**

We hold that each individual and agency is a valuable part of our common work and worthy of respect.

### **Strength in Cultural Diversity**

We promote the strength of our cultural, racial, and historical diversity.

### **Unity of Voice and Action**

We know the value of speaking with a united voice and common language derived from our shared experiences and are committed to acting decisively and collectively.

### **Integrated and Coordinated Services**

We value a full array of services delivered through an integrated systems-of-care delivery process.

### **Multi-Level Involvement**

We encourage active participation and leadership in Council committees, workgroups, and activities from administrative, management, and program staff within member agencies.

### **Quality**

We support continuous quality improvement and best standards of practice within our collective system of services.

### **Achievement of Positive Outcomes**

We strive to provide responsive services that reflect best practices and support achievement of positive safety, permanency, and well-being outcomes.

### **Professional Development**

We work to establish and sustain culturally competent services and are committed to sharing professional expertise and resources.

### **Mutual Support**

We value statewide support on local and regional issues.

### **Integrity and Accountability**

We work to maintain credibility and accountability in our interactions with regulatory offices, purchasers of service, the communities in which we work, and especially the families that we serve.

# PCCYFS SERVICES

*As thought leaders, PCCYFS supports continuous improvement within our collective system of services and strives to identify best practices that will achieve the most positive outcomes for the safety and well-being of children and families. PCCYFS offers member-driven solutions, education and professional development, and advocacy to its members in order to advance our field.*

## **Workgroups and Committees**

Each of our members has valuable insight to contribute as we identify issues, develop data-informed solutions, and promote best practices. PCCYFS members find great value in statewide and regional workgroups that address critical issues pertaining to agency operations and viability. These communities of practice provide excellent opportunities to elevate our field and develop solutions to benefit our agencies and the clients they serve. PCCYFS uses these discussions, proven solutions, and quality data to advise state and local decision makers.

## **Networking**

Members network and learn from one another both regionally and statewide. Through special events, workgroups, trainings, committees, regional councils,

meetings, e-mail groups, and our members-only website, our members know they are never alone when facing a challenge. These forums also allow members to share unique solutions.

## **Communication**

Through relationships with state and local officials, PCCYFS keeps members abreast of the latest developments in the field. Our staff and members have a voice at workgroups and task forces that ultimately influence the operations and direction of Pennsylvania's child serving system. PCCYFS diligently maintains consistent communication with members through regular e-communications such as a newsletter, regional meetings and a members-only website.

## **Professional Support**

Through our sizable network of non-provider vendor members, agencies also have access to a pool of services, often at a discount, to support their agency business functions.





# PCCYFS BECOME A MEMBER

For more than 45 years, Pennsylvania Council of Children, Youth and Family Services has been working to improve the quality of life for Pennsylvania's at-risk children and youth and their families.

PCCYFS works on behalf of its members to break down barriers and build relationships between counties and service providers. PCCYFS identifies system efficiencies to enhance services and service delivery in ways that make the client's experience more seamless. When special needs and issues arise, PCCYFS leverages the resources of its provider members to quickly identify the best resources to address the challenge and achieve successful resolution.

Memberships are available in the categories of provider, supporting and individual. More information and membership applications can be found at [pccyfs.org](http://pccyfs.org).



# Mainline LTC PHARMACY

# THANK YOU TO OUR SPONSORS



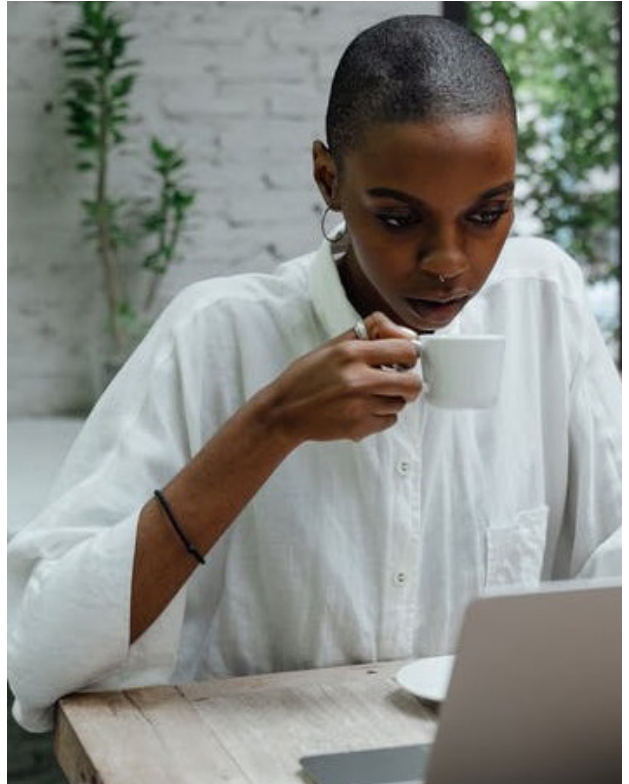
# PCCYFS TRAINING ACADEMY

## **MONTHLY TRAINING**

PCCYFS has an expansive portfolio of pertinent, thought-provoking trainings that it regularly presents. Visit our calendar of events for upcoming trainings at [PCCYFS.ORG](https://www.pccyfs.org)

## **WeDELIVER**

The PCCYFS Training Institute is available to organize on-demand training sessions both in-person or virtual for clinical teams, foster parent groups, social workers, probation officers, teachers, and other relevant stakeholders. The Training Institute will take care of all the administrative details of these trainings, including finding a trainer, scheduling at a time that works best for your team, certificates of attendance, and other specifics. You can select from our list of pre-existing training topics or we can design a curriculum for your group. Rates start at \$200/hour.



---

## **PCCYFS**

3425 SIMPSON FERRY ROAD  
SUITE 201  
CAMP HILL, PA 17110

[HBGOFFICE@PCCYFS.ORG](mailto:HBGOFFICE@PCCYFS.ORG)  
717-651-1727

